



Metal Bellow Seal (MB 630 Series)

MB 630



Metal Bellow Seal MB 630 Series is welded metal bellow seals used in process pumps for high temperature and moderate pressure applications in chemical, petrochemical & refineries. These bellow seals are constructed by welding a series of diaphragms together at the edges. The bellow unit eliminates the need of spring, dynamic secondary seal and provides flexibility to the seal face in addition to compensating for seal face wear. Drive to the seal is given by strong drive lugs, which also protects the bellows from damage.

Applications : Chemicals, Petrochemicals, Petroleum Refineries.

Seal Components :

Seal Face :

Carbon / Silicon Carbide

Carbon / Tungsten Carbide

Silicon Carbide / Tungsten Carbide

Secondary Seal : Grafoil

Metal Parts : SS 316, Carpenter-42

Welded Bellows : AM 350

Seal Characteristics :

- Single Acting
- Inherently Balanced
- Inside Mounted
- Independent of Direction of Rotation
- Welded Metal Bellows

Operating Parameters :

Shaft Dia : 1.000 to 4.000 Inch

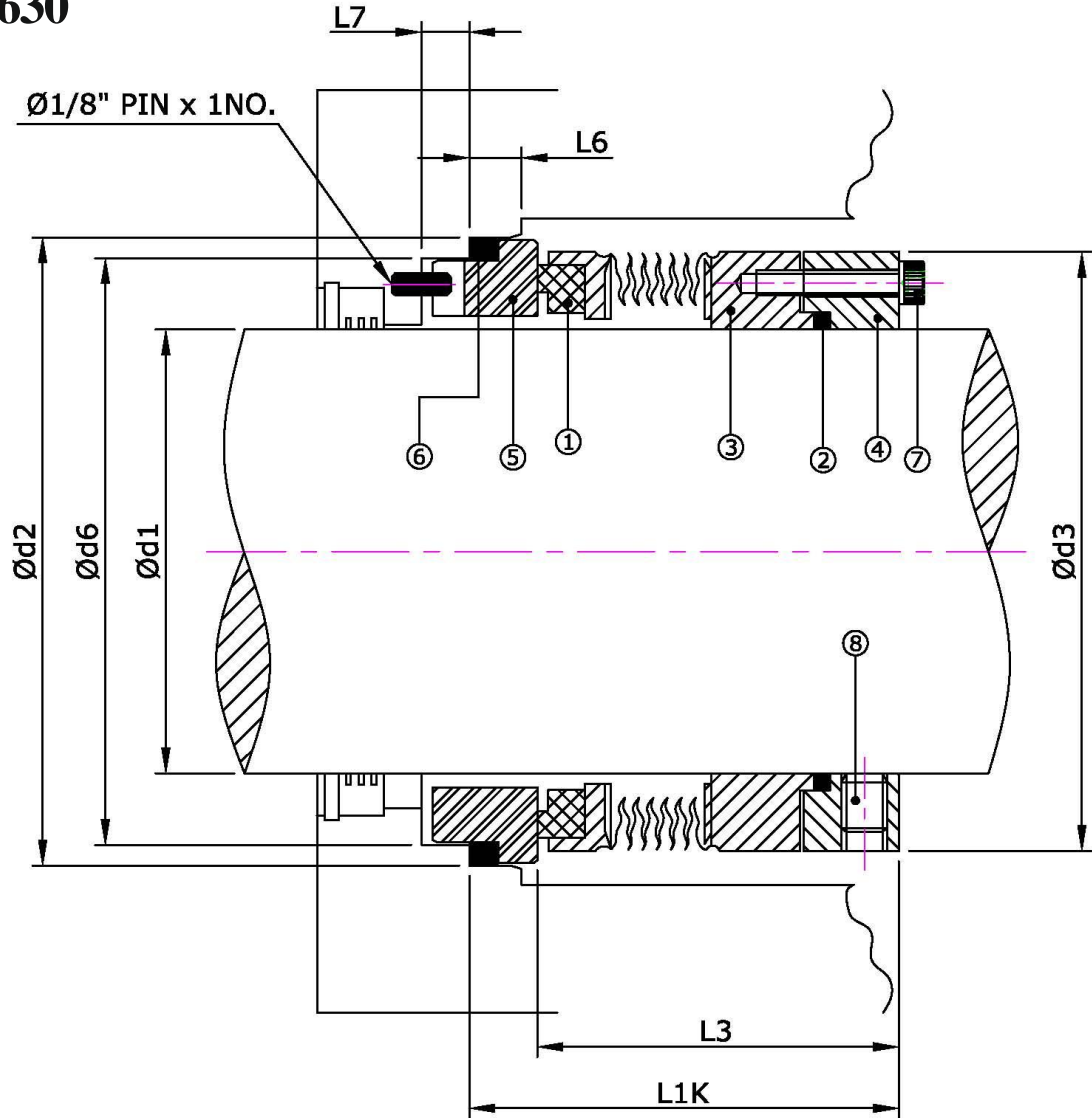
Pressure : 14 Bars (max)

Temperature : -20 to +350°C

Velocity : Up to 20 m/sec



MB 630



ITEM	DESCRIPTION
1	SEAL RING
2	GRAFOIL PACKING
3	WELDED BELLOW RETAINER
4	PUSHER
5	MATING RING
6	GRAFOIL PACKING
7	ALLEN SCREW
8	SET SCREW



MB 630 DIMENSIONS IN INCH

SEAL SIZE								
+0.00 d1 -0.05		+0.00 d2 -0.05	d3	+0.10 d6 -0.00	L6	L7	L3	L1K
Inch	mm							
1.000	25.40	41.15	41.30	35.20	7.00	8.50	37.50	44.50
1.125	28.58	44.32	44.00	38.30	7.00	8.50	37.50	44.50
1.250	31.75	47.50	49.50	41.60	7.00	8.50	41.30	48.30
1.375	34.92	50.67	54.00	44.70	7.00	9.00	46.00	53.00
1.500	38.10	53.85	57.00	47.90	7.00	9.00	46.00	53.00
1.625	41.28	60.20	60.00	54.30	7.00	9.00	46.00	53.00
1.750	44.45	63.35	62.50	57.50	7.00	9.0	46.00	53.00
1.875	47.62	66.55	67.00	60.60	7.00	9.00	46.00	53.00
2.000	50.80	69.72	69.50	63.80	7.00	9.00	47.60	54.60
2.125	53.98	76.05	72.50	70.10	7.00	9.00	47.60	54.60
2.250	57.15	79.24	76.00	73.30	7.00	9.00	49.20	56.20
2.375	60.32	82.42	81.50	76.50	7.00	9.00	49.20	56.20
2.500	63.50	85.60	85.50	79.65	7.00	9.00	49.20	56.20
2.625	66.68	85.60	89.00	79.65	7.00	9.00	51.00	58.00
2.750	69.85	88.77	92.00	82.80	7.00	9.00	51.00	58.00
2.875	73.02	91.66	95.50	85.70	9.50	9.00	51.00	60.50
3.000	76.20	94.84	99.00	88.90	9.50	9.00	51.00	60.50
3.125	79.38	98.00	101.50	92.10	9.50	9.00	51.00	60.50
3.250	82.55	101.16	105.00	95.30	9.50	9.00	51.00	60.50
3.375	85.72	104.36	108.00	98.40	9.50	9.00	51.00	60.50
3.500	88.90	107.54	111.00	101.60	9.50	9.00	51.00	60.50
3.625	92.08	110.70	114.50	104.75	9.50	9.00	51.00	60.50
3.750	95.25	113.88	117.50	108.00	9.50	9.00	51.00	60.50
3.875	98.42	117.56	120.50	111.10	9.50	9.00	51.00	60.50
4.000	101.60	120.22	124.50	114.30	9.50	9.00	51.00	60.50